

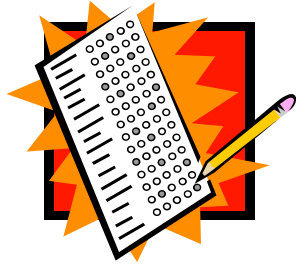
# **HARDYSTON TOWNSHIP SCHOOLS**

*Our Legacy, A Well Educated Child*

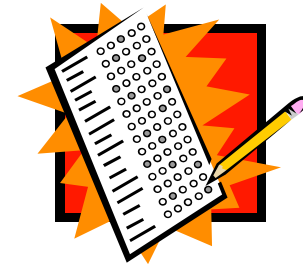
**Dennis Tobin**  
*Superintendent of Schools*

## **2007-2008 STRATEGIC ACADEMIC IMPROVEMENT PLAN**

- 1) Parent Communication
  - a) Grade-Level Curriculum Guides
  - b) Teacher Classroom Websites
  - c) Written Correspondences
  - d) Scheduled Building-Level Parent Meetings
  - e) Monthly Front Page School Newsletter
  - f) School Instant Alert Communication System
- 2) Summer Student Reading Lists / Math Packets
- 3) Review of State Assessment Results
  - a) Provide Individual Student Programming (IEP)/ Grouping
  - b) Evaluate Individual Teacher Classroom Instructional Programming
  - c) Evaluate District Curriculum
- 4) Tracking of Students (grade-to-grade by staff to know student academic weaknesses and strengths)
- 5) Extra Help Programs
  - a) After School Extended Learning Program for grades 3-8
  - b) WVRHS Volunteer Student Tutors
- 6) District Curriculum
  - a) On-going Review / Revisions / Development
  - b) Effective Implementation
  - c) Effective Assessment procedures to evaluate identified Curriculum Exit Skills
  - d) Student Test Prep Programs
  - e) Implement new Math textbooks
- 7) BSI / Supplemental Intervention Programming
  - a) Provided for students who test into non-proficient category of standardized tests, do not meet identified curriculum exit skills, or recommended by staff through I&RS process
- 8) Staff Professional Development – provide on-going opportunities for instructional staff
- 9) Research exemplary Middle School & Elementary School general and special education programs
- 10) Increase classroom instructional aide support in special education resource room and self-contained instructional settings



2007  
HARDYSTON TOWNSHIP  
SCHOOLS  
STATE ASSESSMENT  
RESULTS/ANALYSIS



# TESTING INFORMATION

- Students in grades 3-8 in New Jersey were tested during the 2006-2007 school year.
- State Testing assessed the academic areas of Language Arts and Math in grades 3-8, along with Science in grades 4 & 8.
- Test results are reported in various forms. The main report indicating whether a child is partially proficient, proficient, or advanced proficient in an academic area.
- Results are provided for different student groups – our district included Special Education, General Education, and Total Students.
- The goal of the No Child Left Behind initiative is for all students to be assessed and be proficient in all academic areas by the year 2014.
- A Standard Deviation in the test results may occur from one year to another due to:
  - Testing population
  - Test clusters being more difficult/easier
  - Rubric used to score test may change
  - Evaluators used to score tests

# NJ Incremental Increases/Expectations

		Starting Point 2003	2005	2008	2011	2014
Language Arts/Literacy	Grade 4	68	75	82	91	100
	Grade 8	58	66	76	87	100
	Grade 11	73	79	85	92	100
Math	Grade 4	53	62	73	85	100
	Grade 8	39	49	62	79	100
	Grade 11	55	64	74	86	100



# GENERAL EDUCATION STUDENTS

## MATH

GRADE	VALID SCORES/ TOTAL STUDENTS	(100-199) #PARTIALLY PROFICIENT	(200-249) #PROFICIENT	(250-300) #ADVANCED PROFICIENT	TOTAL % PROFICIENT	DFG	STATE
3	74/75	3	49	22	95.9	94.5	91.0
4	72/73	3	34	35	95.8	93.4	89.7
5	70/71	2	52	16	97.2	93.0	89.9
6	91	6	70	15	93.4	90.6	86.1
7	71	13	43	15	81.0	80.3	74.5
8	76	4	45	27	94.7	84.5	77.7

## SCIENCE

4	72/73	0	28	44	100.0	94.2	87.9
8	76	2	48	26	97.4	93.1	86.2

## SPECIAL EDUCATION STUDENTS LANGUAGE ARTS

GRADE	VALID SCORES/ TOTAL STUDENTS	(100-199) #PARTIALLY PROFICIENT	(200-249) #PROFICIENT	(250-300) #ADVANCED PROFICIENT	TOTAL % PROFICIENT	DFG	STATE
3	13	8	5	0	38.5	63.5	56.8
4	12/13	5	7	0	58.3	54.6	49.5
5	18	5	13	0	72.2	74.0	64.0
6	18	14	4	0	22.2	42.1	38.2
7	15	12	3	0	20.0	51.8	45.1
8	16	11	5	0	31.3	36.7	32.9

# SPECIAL EDUCATION STUDENTS

## MATH

GRADE	VALID SCORES/ TOTAL STUDENTS	(100-199) #PARTIALLY PROFICIENT	(200-249) #PROFICIENT	(250-300) #ADVANCED PROFICIENT	TOTAL % PROFICIENT	DFG	STATE
3	13	6	7	0	53.8	77.4	71.9
4	11/13	6	1	4	45.5	67.4	63.7
5	17/18	10	6	1	41.2	64.3	59.7
6	18	12	6	0	33.3	50.5	46.9
7	15	14	1	0	6.7	31.2	28.6
8	16	13	2	1	18.8	32.9	28.8

## SCIENCE

4	12/13	3	5	4	75.0	73.2	66.4
8	16	5	11	0	68.8	61.1	50.5

# TOTAL STUDENTS

## LANGUAGE ARTS

GRADE	VALID SCORES/ TOTAL STUDENTS	(100-199) #PARTIALLY PROFICIENT	(200-249) #PROFICIENT	(250-300) #ADVANCED PROFICIENT	TOTAL % PROFICIENT	DFG	STATE
3	88	15	64	9	82.9	88.8	83.4
4	84/86	9	71	4	89.3	85.6	80.6
5	88/89	8	73	7	91.0	93.5	88.8
6	108/109	24	74	10	77.8	81.7	75.8
7	86	19	59	8	77.9	86.7	80.1
8	92	17	65	10	81.6	80.2	73.7

## TOTAL STUDENTS - MATH

GRADE	VALID SCORES/ TOTAL STUDENTS	(100-199) #PARTIALLY PROFICIENT	(200-249) #PROFICIENT	(250-300) #ADVANCED PROFICIENT	TOTAL % PROFICIENT	DFG	STATE
3	87/88	9	56	22	89.7	91.5	87.3
4	83/86	9	35	39	89.2	88.9	84.7
5	87/89	12	58	17	86.2	88.0	84.2
6	109	18	76	15	83.5	84.0	79.0
7	86	27	44	15	68.0	72.5	66.3
8	92	17	47	28	81.5	76.4	68.4

## TOTAL STUDENTS - SCIENCE

4	84/86	3	33	48	96.4	90.3	83.1
8	92	7	59	26	92.4	87.7	78.9

## DISTRICT TEST RESULTS ANALYSIS

### Language Arts Literacy

Our **General Education** students are performing above the state averages in Language Arts Literacy at all grade levels tested. Four of our six grades tested are performing slightly below our District Factor Group (DFG) averages in Language Arts Literacy.

Our **Special Education** students are performing below the state averages in five of the six grades tested in Language Arts Literacy. Our Middle School Special Education population failed to meet the benchmark set forth by the state in Language Arts Literacy. This will need to be a focus of our Middle School programming during the 2007-2008 school year.

Our **Total Student** population in Language Arts Literacy is performing above the state averages for the most part and slightly below our District Factor Group (DFG) – this is largely due to the below average scores in our Special Education groups.

### Mathematics

Our **General Education** students are performing above the state and our District Factor Group (DFG) averages in all grade levels in Mathematics.

Our **Special Education** students are performing below the state and our District Factor Group (DFG) averages in all grade levels in Mathematics. This will need to be a focus of our Middle School programming during the 2007-2008 school year.

Our **Total Student** population in Mathematics is performing above the state averages in all grade levels, but below our District Factor Group (DFG) averages in four of six grade levels – this is largely due to the below average scores in our Special Education groups.

### Science

**All of our students**, both General Education and Special Education, are performing above the state and our District Factor Group (DFG) averages in Science on all grade levels tested.

**3 – YEAR DISTRICT ANALYSIS**  
**Percentage of Student Proficiency or Advanced Proficiency**  
**LANGUAGE ARTS LITERACY**

<b>GENERAL EDUCATION</b>			
<b>GRADE</b>	<b>2005</b>	<b>2006</b>	<b>2007</b>
3	92.6	100.0	90.7
4	97.6	91.1	94.5
5	N/A	90.8	95.7
6	N/A	90.3	88.9
7	N/A	98.6	90.2
8	83.9	95.6	92.1

<b>SPECIAL EDUCATION</b>			
<b>GRADE</b>	<b>2005</b>	<b>2006</b>	<b>2007</b>
3	50.0	63.6	38.5
4	14.3	18.8	58.3
5	N/A	50.0	72.2
6	N/A	40.0	22.2
7	N/A	53.8	20.0
8	0.0	37.5	31.3

<b>TOTAL STUDENTS</b>			
<b>GRADE</b>	<b>2005</b>	<b>2006</b>	<b>2007</b>
3	85.2	94.4	82.9
4	85.6	77.1	89.3
5	N/A	84.5	91.0
6	N/A	81.6	77.8
7	N/A	91.5	77.9
8	76.4	84.7	81.6

**3 – YEAR DISTRICT ANALYSIS**  
**Percentage of Student Proficiency or Advanced Proficiency**  
**MATHEMATICS**

<b>GENERAL EDUCATION</b>			
<b>GRADE</b>	<b>2005</b>	<b>2006</b>	<b>2007</b>
3	89.7	95.1	95.9
4	97.6	95.6	95.8
5	N/A	89.6	97.2
6	N/A	90.4	93.4
7	N/A	90.0	81.0
8	71.4	89.9	94.7

<b>SPECIAL EDUCATION</b>			
<b>GRADE</b>	<b>2005</b>	<b>2006</b>	<b>2007</b>
3	73.3	63.6	53.8
4	35.7	53.0	45.5
5	N/A	50.0	41.2
6	N/A	33.3	33.3
7	N/A	26.9	6.7
8	0.0	31.3	18.8

<b>TOTAL STUDENTS</b>			
<b>GRADE</b>	<b>2005</b>	<b>2006</b>	<b>2007</b>
3	86.7	90.3	89.7
4	88.7	86.9	89.2
5	N/A	83.5	86.2
6	N/A	80.7	83.5
7	N/A	79.5	68.0
8	65.3	78.8	81.5

**3 – YEAR DISTRICT ANALYSIS**  
**Percentage of Student Proficiency or Advanced Proficiency**  
**SCIENCE**

<b>GENERAL EDUCATION</b>			
<b>GRADE</b>	<b>2005</b>	<b>2006</b>	<b>2007</b>
4	N/A	90.9	100.0
8	86.7	94.1	97.4

<b>SPECIAL EDUCATION</b>			
<b>GRADE</b>	<b>2005</b>	<b>2006</b>	<b>2007</b>
4	N/A	76.5	75.0
8	25.0	56.3	68.8

<b>TOTAL STUDENTS</b>			
<b>GRADE</b>	<b>2005</b>	<b>2006</b>	<b>2007</b>
4	86.6	87.9	96.4
8	81.3	86.8	92.4